

# KARIBAN

REFERENCE : K489

SIZES : XS\_S\_M\_L\_XL\_XXL\_3XL\_4XL

**COMPOSITION :**

Main fabric : Brushed Cotton / Polyester fleece 80/20 - 300  
80%cotton / 20%polyester

Lining 1 : Cotton thermal - 215 100%cotton

**WEIGHT :**

Main fabric : 300 gsm

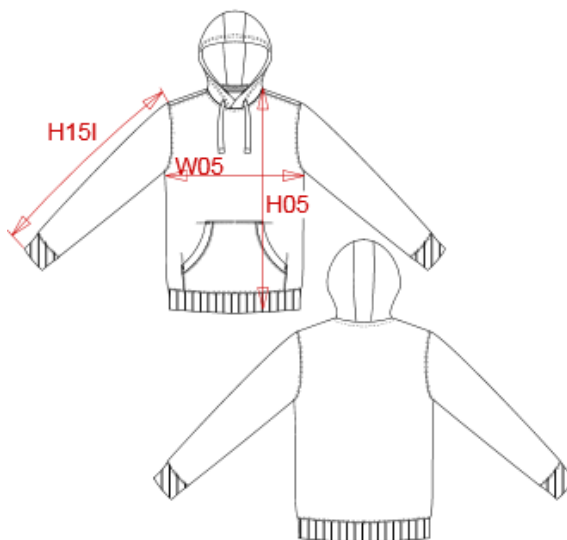
Lining 1 : 215 gsm

**TECHNICAL DETAIL :**

LSF

**ARTICLE WEIGHT :**

600 gr/pc



DESCRIPTION
<b>Français :</b> Sweat-shirt capuche
<b>English :</b> Hooded sweatshirt
<b>Nederlands :</b> Sweater met capuchon
<b>Deutsch :</b> Kapuzensweatshirt
<b>Español :</b> Sudadera con capucha
<b>Italiano :</b> Felpa con cappuccio
<b>Português :</b> Sweatshirt com capuz

COLORS	PANTONE SERIGRAPHIE
Black	Black
Navy	433C
Red	200C
Light royal blue	653C
Oxford grey	Based on Cool gray 7C
White	White
Dark grey	447C

MEASUREMENT									
Description	XS	S	M	L	XL	XXL	3XL	4XL	
<b>H05 (M)</b> Hauteur totale avec BC/ Total height with rib	68	70	72	74	76	78	80	82	
<b>W05 (M)</b> 1/2 largeur poitrine à 1.5cm de l'emmanchure / 1/2 chest width at 1.5cm below armhole	49	52	55	58	61	64	67	70	
<b>H15I (M)</b> Longueur manche avec bord côte / Sleeve length with rib	65,60	66,40	67,10	68	68,60	69,40	70,40	71,40	

CARE LABEL

PACKING	
Box	16 pcs / box XS => 60cm W:40cm H:34cm GW:10.1kg NW:8.5kg S => L:60cm W:40cm H:34cm GW:10.6kg NW:9.1kg M => L:60cm W:40cm H:34cm GW:11.0kg NW:9.4kg L => L:60cm W:40cm H:36cm GW:11.5kg NW:9.9kg XL => L:60cm W:40cm H:36cm GW:11.7kg NW:10.1kg XXL => L:60cm W:40cm H:36cm GW:12.6kg NW:11.0kg 3XL => L:60cm W:40cm H:38cm GW:13.1kg NW:11.5kg 4XL => L:60cm W:40cm H:38cm GW:13.8kg NW:12.2kg